

## CHARACTERISTICS

MT 1030 EASY 75D ST3B S2

I.C. ENGINE		
Type		DEUTZ TD3,6L/313
Fuel		Diesel
Number of cylinders		4 in line
Suction		Supercharged
Injection system		Direct
Ignition sequence		1.3.4.2
Capacity	cm <sup>3</sup>	3621
Bore and stroke	mm	98 x 120
Compression ratio		18
Nominal speed laden	rpm	2200
Idling speed slow unladen	rpm	930
Max. speed unladen	rpm	2360
Power ISO/TR 14396	hp - kW	75 - 55,4
Power SAE J 1995	hp - kW	75 - 55,4
Maximum torque ISO/TR 14396	Nm	330 to 1600 rpm
Air filtration efficiency	%	99,9
Type of cooling		By water
Fan		Puller

TRANSMISSION		
Gear box		TURNER
- Type		Mechanical
- Forward/reverse selector		Electro-hydraulic
- Torque converter		SACHS
- Number of forward speeds		4
- Number of reverse speeds		4
Angle gear box		TURNER
Front axle		DANA
- Differential		Limited slip
Rear axle		DANA
- Differential		Without locking
Drive wheels		4RM Permanent
- Switch for 2/4 drive wheels		No
Front tyres		ALLIANCE
- Size		400/80-24 A325 162A8 ATG
- Pressure	bar	3,8
Rear tyres		ALLIANCE
- Size		400/80-24 A325 162A8 ATG
- Pressure	bar	3,8

ELECTRIC CIRCUIT		
Battery	STANDARD OPTION	12 V - 180 Ah - 900 A EN
Alternator		12 V - 95 A
- Type		ISKRA AAK3869
Starter		12 V - 3,2 kW
- Type		ISKRA AZE4668

BRAKE CIRCUIT		
Service brake		Non-servo hydraulic brake
- Type of brake		Multidisk brake immersed in oil
- Type of control		Foot-operated for the front and rear axles
Parking brake		Mechanical
- Type of brake		Disk on gear-box output
- Type of control		Manual

SOUND AND VIBRATION		
Sound pressure level in the driver's cab LpA (according to standard NF EN 12053)	dB(A)	78 (cab closed) ; xx (cab open)
Sound pressure (according to directive 2009/76)	dB(A)	xx (cab closed) ; xx (cab open)
Sound pressure level ensured in the LwA environment (according to directive 2000/14/EC modified by directive 2005/88/EC)	dB(A)	104 (measured) ; 104 (ensured)
Sound level in motion (according to directive 2009/63)	dB(A)	xx
Average weighted acceleration on driver's body (according to standard NF EN 13059)	m/s <sup>2</sup>	1,1
The average weighted acceleration transmitted to the driver's hand/ arm system (according to standard ISO 5349-2)	m/s <sup>2</sup>	< 2,5
Standard seat vibration	m/s <sup>2</sup>	xx (lightweight operator) ; xx (heavyweight operator)

<b>HYDRAULIC CIRCUIT</b>			
Hydraulic pump		Gear type with flow divider	
- Type		1st casing	2nd casing
- Capacity	cm <sup>3</sup>	44	8
- Max. rating capacity unladen	l/mn	104	20
- Flow rate at 1600 rpm	l/mn	70	13
Filtration			
- Return	µm	10	
- Suction	µm	125	
Maximum service pressure		260	
- Telescoping circuit	bar	190 / 260	
- Lifting circuit	bar	260 / 260	
- Tilt circuit	bar	260 / 190	
- Stabilizers circuit	bar	260	
- Attachment circuit	bar	260	
- Steering circuit	bar	140	

<b>HYDRAULIC MOVEMENTS</b>			
Longitudinal stability limiter and warning device		Electronic	
Lifting motions (boom retracted)			
- Unladen lifting	s - m/mn	6,7 - 41,9	
- Laden lifting	s - m/mn	8,5 - 33,1	
- Unladen lowering	s - m/mn	5,4 - 51,1	
- Laden lowering	s - m/mn	5,5 - 51,1	
Telescoping motions (boom raised)			
- Unladen extending	s - m/mn	13,6 - 12,6	
- Laden extending	s - m/mn	13,6 - 12,6	
- Unladen retracting	s - m/mn	8,7 - 19,7	
- Laden retracting	s - m/mn	8,4 - 20,4	
Tilting movements			
- Unladen digging	s - °/s	2,7 - 46,5	
- Forward tilting unladen	s - °/s	2,3 - 54,6	

<b>SPECIFICATIONS AND WEIGHTS</b>			
Speed of movement for lift truck in standard configuration on flat ground (except particular conditions)			
Front unladen	1	km/h	4,5
	2	km/h	7,3
	3	km/h	15
	4	km/h	25
Rear unladen	1	km/h	4,5
	2	km/h	7,3
	3	km/h	15
	4	km/h	25
Standard attachment		TFF 35 MT-1040	
- Weight with forks	kg	165	
- Weight of forks (each one)	kg	67,5	
Rated capacity with standard attachment	kg	3000	
Tipping load at maximum reach on stabilisers	kg	1160	
Distance from the centre of gravity from the load to the lug of the forks	mm	500	
Standard lifting height	mm	9640	
Lift truck weight without attachment	kg	7420	
Lift truck weight with standard attachment			
- Unladen	kg	7720	
- At rated load	kg	10720	
Weight per axle with standard attachment (transport position)			
- Front unladen	kg	4240	
- Rear unladen	kg	3840	
- Front rated load	kg	9700	
- Rear rated load	kg	1020	
Weight per axle with standard attachment (boom extended)			
- Front rated load	kg	7200	
- Rear rated load	kg	520	
Drag strain on the coupling hook			
- Unladen (sliding)	daN	5530	
- At rated load (transmission setting)	daN	8160	
Pull strain with open carrier (according to standard ISO 8313)		daN	
		5770	

# TIRES

MT 732 EASY 75D ST3B S1		PRESSURE (bar)	TYRE LOAD (kg)			
			FRONT UNLADEN	FRONT LADEN	REAR UNLADEN	REAR LADEN
ALLIANCE	400/80-24 A325 162A8 ATG	3	1650	4350	1750	650
	460/70R24 159A8 A580	4				
GOODYEAR	15,5/80-24 SGI 12PR TUBELESS	4				
MICHELIN	460/70R24 XMCL 159A8 TUBELESS	3,4				
	400/80-24 156A8 IND POWER CL TUBELESS	3				
	15,5R25 XHA TUBELESS	3,5				

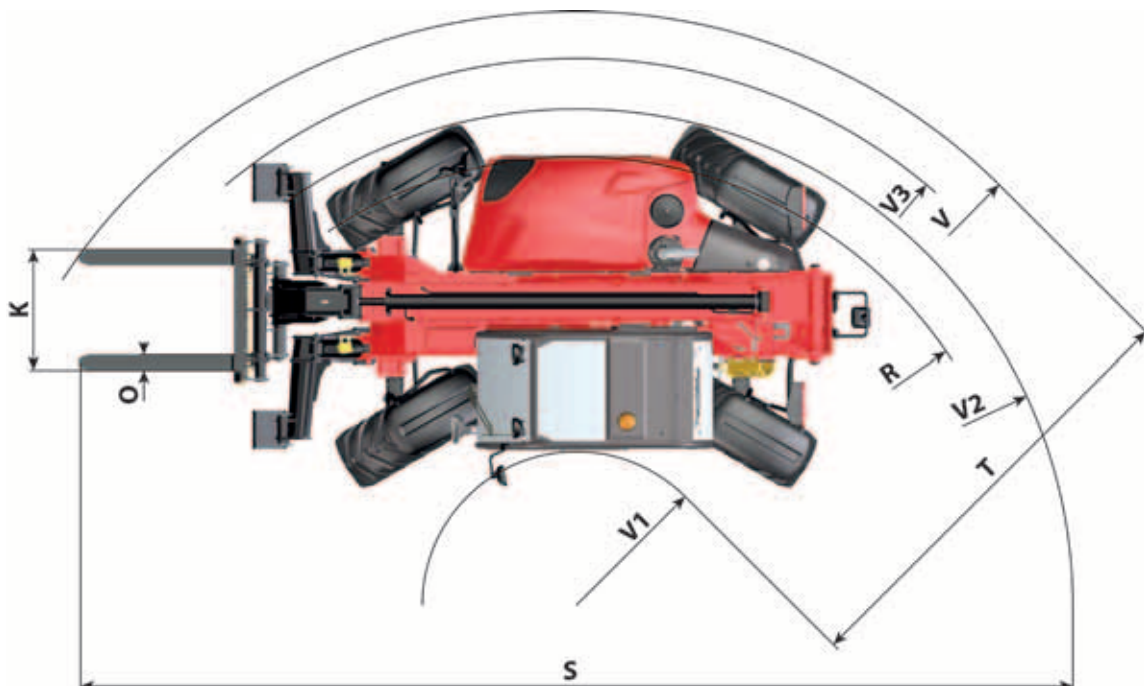
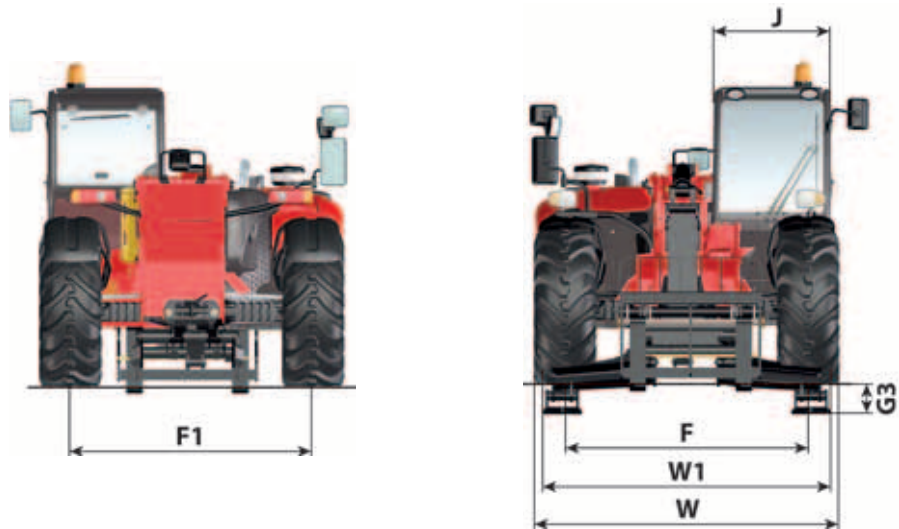
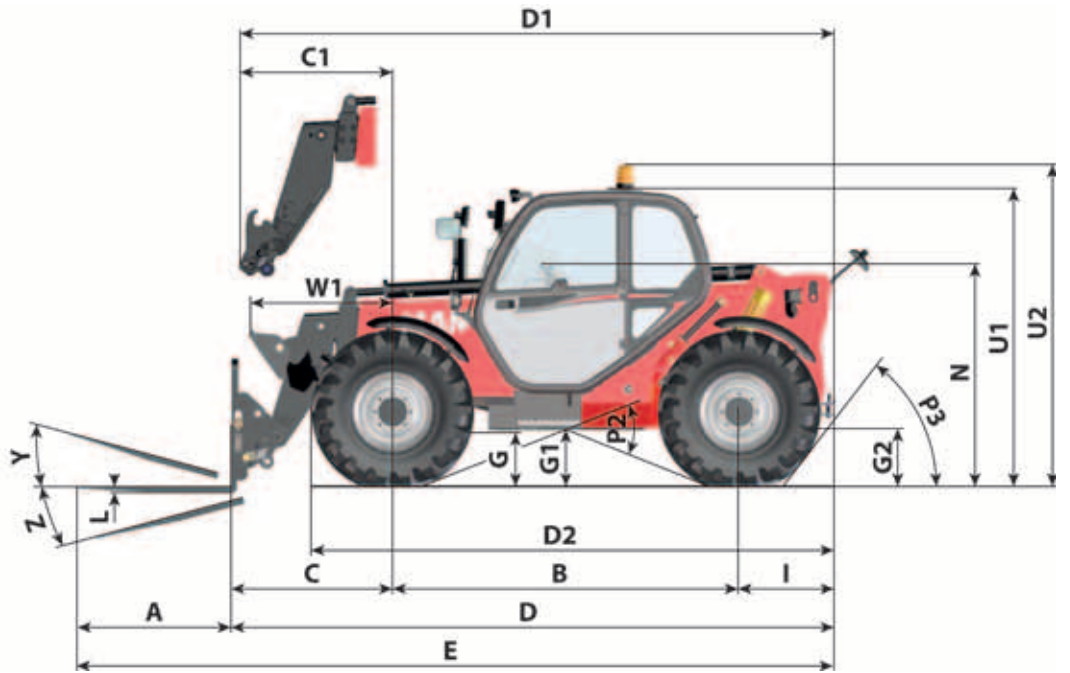
MT 932 EASY 75D ST3B S1		PRESSURE (bar)	TYRE LOAD (kg)			
			FRONT UNLADEN	FRONT LADEN	REAR UNLADEN	REAR LADEN
ALLIANCE	400/80-24 A325 162A8 ATG	3	1700	4350	1850	800
	460/70R24 159A8 A580	4				
GOODYEAR	15,5/80-24 SGI 12PR TUBELESS	4				
MICHELIN	460/70R24 XMCL 159A8 TUBELESS	3,4				
	400/80-24 156A8 IND POWER CL TUBELESS	3				
	15,5R25 XHA TUBELESS	3,5				

MT 1030 ...		PRESSURE (bar)	TYRE LOAD (kg)			
			FRONT UNLADEN	FRONT LADEN	REAR UNLADEN	REAR LADEN
ALLIANCE	400/80-24 A325 162A8 ATG	3,8	2150	4850	1750	550
	460/70R24 159A8 A580	4				
MICHELIN	460/70R24 XMCL 159A8 TUBELESS	3,4				
	400/80-24 156A8 IND POWER CL TUBELESS	3				
	15,5R25 XHA TUBELESS	3,5				

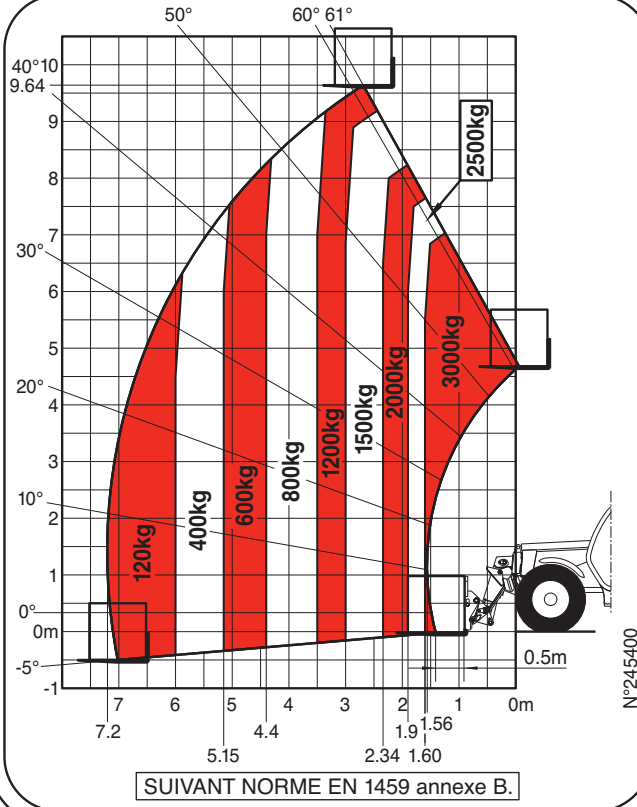
		PRESSURE (bar)	LOAD (kg)	PRESSURE ON THE CONTACT SURFACE (kg/cm <sup>2</sup> )		AREA OF THE CONTACT SURFACE (cm <sup>2</sup> )		
				HARD SOIL	LOOSE SOIL	HARD SOIL	LOOSE SOIL	
ALLIANCE	400/80-24 A325 162A8 ATG	3	650					
			800					
			1650					
			1700					
			1750					
			1850					
	3,8	4350						
		550						
		1750						
	460/70R24 159A8 A580	4	2150					
			4850					
			550					
			650					
			800					
			1650					
	GOODYEAR	15,5/80-24 SGI 12PR TUBELESS	4	1700	7,27	1,99	90	330
				1750	6,95	1,84	115	435
				1850	7,86	2,14	210	770
4350				7,94	2,16	214	786	
550				8,02	2,18	218	802	
650				8,18	2,22	226	834	
MICHELIN		460/70R24 XMCL 159A8 TUBELESS	3,4	1700	12,08	3,18	360	1370
				1750	1,40	0,41	441	1475
				1850	1,46	0,45	476	1512
				4350	1,54	0,52	529	1568
				4850	1,99	0,87	827	1885
				550	2,01	0,89	843	1903
		400/80-24 156A8 IND POWER CL TUBELESS	3	1700	2,03	0,91	858	1922
				1750	2,08	0,94	888	1959
				1850	2,20	1,04	977	2070
				4350	2,84	1,49	1519	2888
				4850	2,98	1,59	1641	3074
				550	4,93	0,47	113	1186
15,5R25 XHA TUBELESS	3,5	1700	5,12	0,53	127	1221		
		1750	5,41	0,63	148	1273		
		1850	6,63	1,05	249	1571		
		4350	6,67	1,07	255	1588		
		4850	6,73	1,09	260	1606		
		550	6,83	1,13	271	1640		
			1700	7,05	1,20	299	1745	
			1750	8,68	1,73	501	2515	
			1850	9,05	1,85	547	2690	
			4350					
			4850					
			550					

# DIMENSIONS AND LOAD CHART MT 1030...

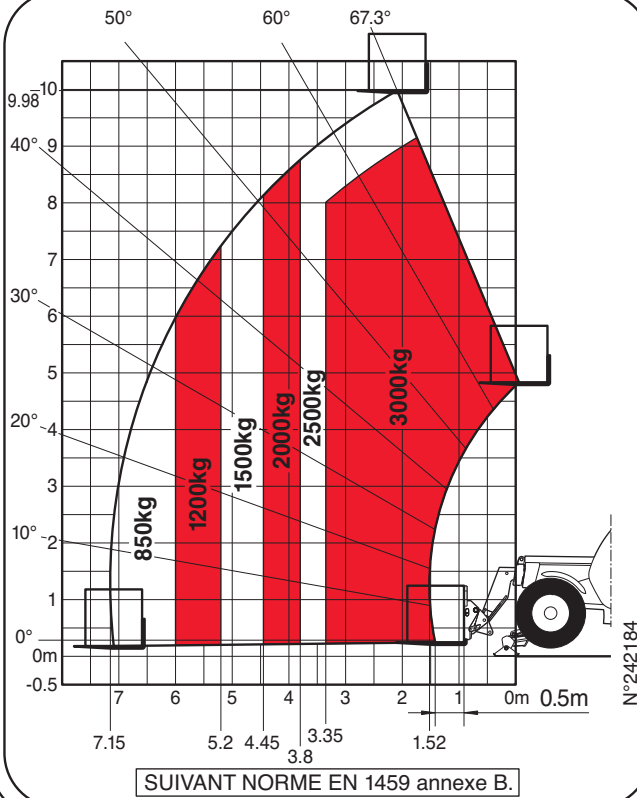
A	mm	1200
B	mm	2690
C	mm	1513
C1	mm	1602
D	mm	4992
D1	mm	5081
D2	mm	4050
E	mm	6192
F	mm	1930
F1	mm	1930
G	mm	450
G1	mm	450
G2	mm	435
G3	mm	220
I	mm	789
J	mm	890
K	mm	1260
L	mm	45
N	mm	1715
O	mm	125
P2	°	44
P3	°	53
R	mm	3545
S	mm	7810
T	mm	3640
U1	mm	2299
U2	mm	2488
V	mm	4950
V1	mm	1310
V2	mm	3752
V3	mm	4200
W	mm	2340
W1	mm	2210
W2	mm	1132
Y	°	11,9
Z	°	113,7



○ MT1030 S/MT-X1030 ST ○



○ MT1030 S/MT-X1030 ST ○



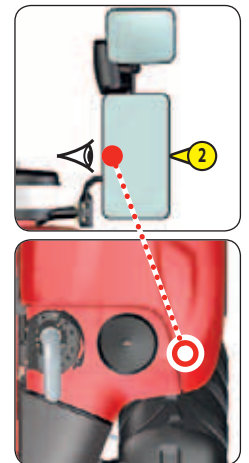
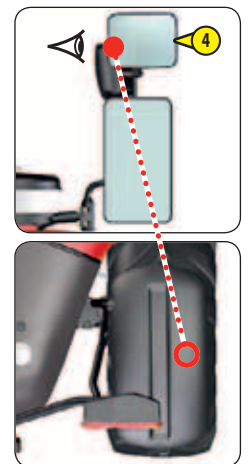
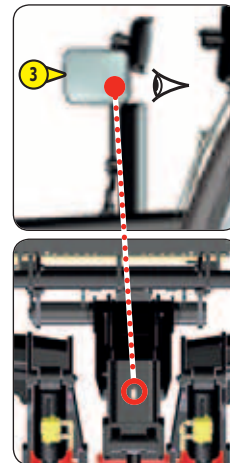
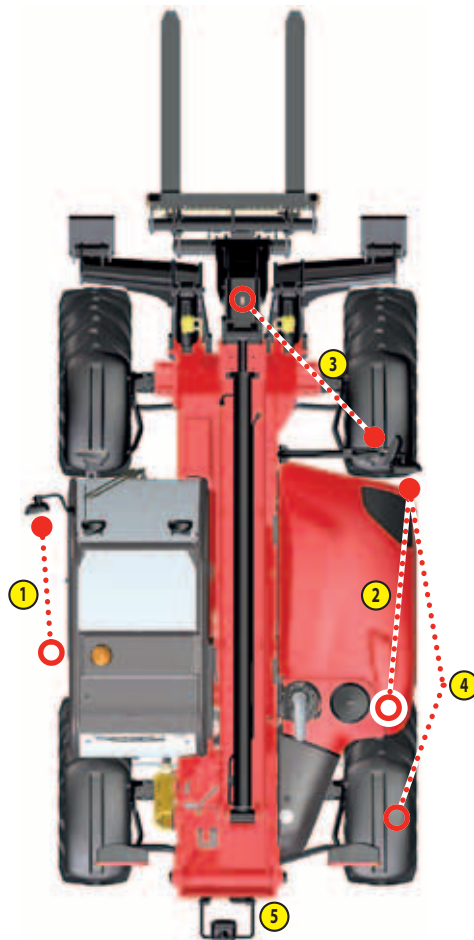
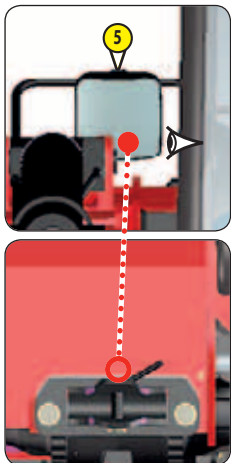
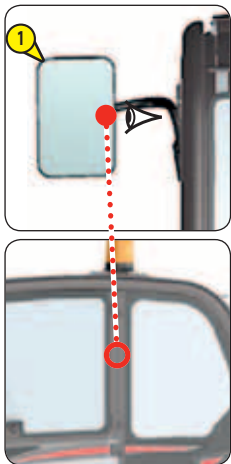
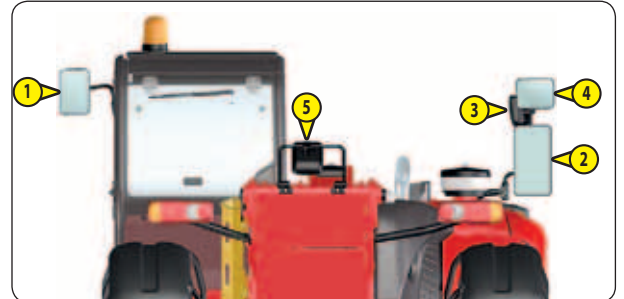
Our lift trucks conform to European standard EN15830 with regard to operator visibility.

- Follow the instructions for optimizing operator visibility of the immediate vicinity (see: 1 - OPERATING AND SAFETY INSTRUCTIONS: INSTRUCTIONS TO THE OPERATOR: DRIVING INSTRUCTIONS UNLADEN AND LADEN: D - VISIBILITY).

## DESCRIPTION AND ADJUSTMENT OF REAR-VIEW MIRRORS

- 1 - LEFT REAR-VIEW MIRROR
- 2 - MAIN RIGHT REAR-VIEW MIRROR
- 3 - CENTRAL RIGHT REAR-VIEW MIRROR
- 4 - UPPER RIGHT REAR-VIEW MIRROR
- 5 - REAR REAR-VIEW MIRROR

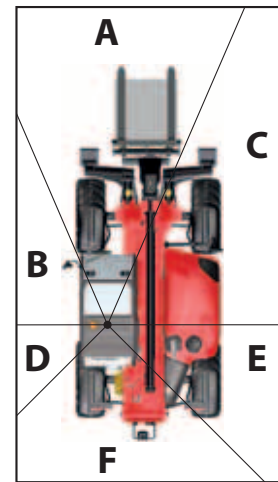
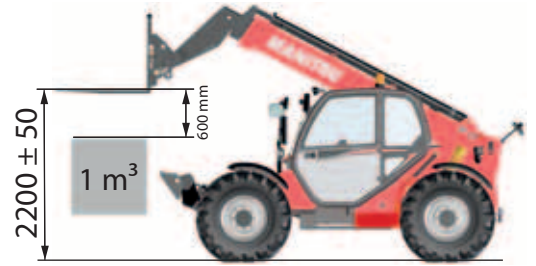
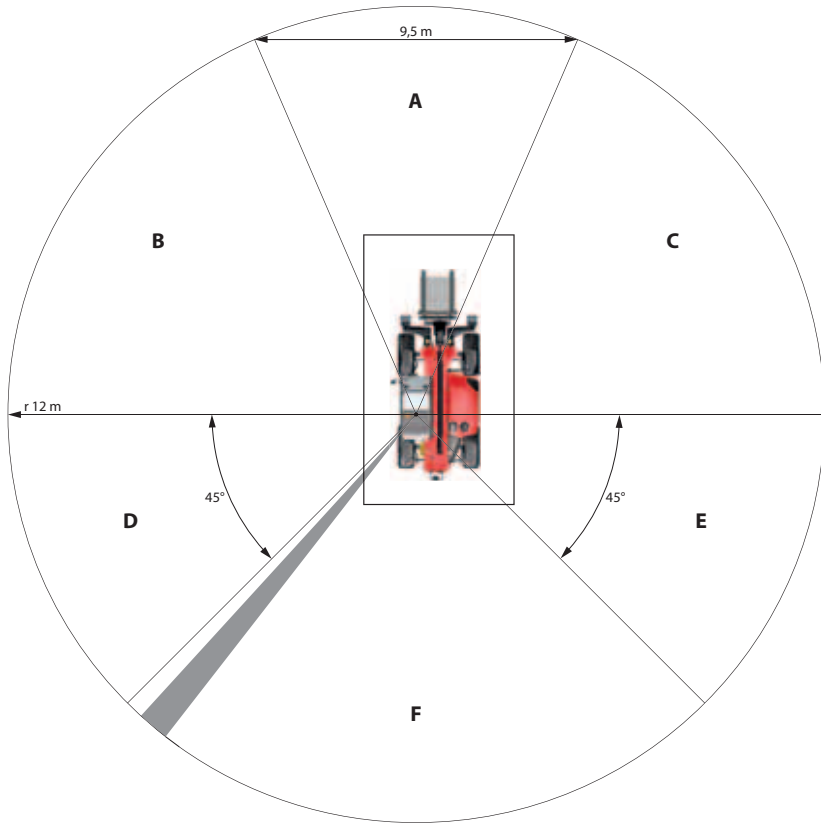
- Place the lift truck on level ground with the I.C. engine stopped, and the jib retracted and lowered as far as possible.
- Note the position of the reference points ●...○ in the illustrations, to see and correctly adjust the rear-view mirrors.



**DIRECT AND/OR INDIRECT VISIBILITY BLIND SPOT ZONES**

In accordance with EN15830, the two diagrams indicate blind spot zones on the visibility test circle (r 12m) and the 1m rectangular zone around the lift truck.

**HANDLING SUSPENDED LOADS**



**LOADING THE TRAILER**

